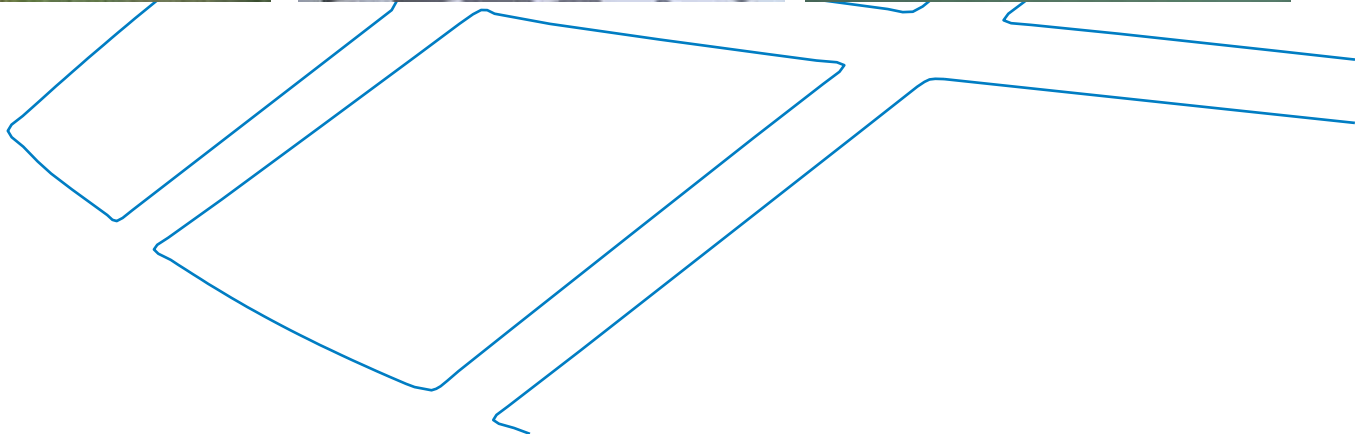


COURT TILE INSTALLATION INSTRUCTIONS



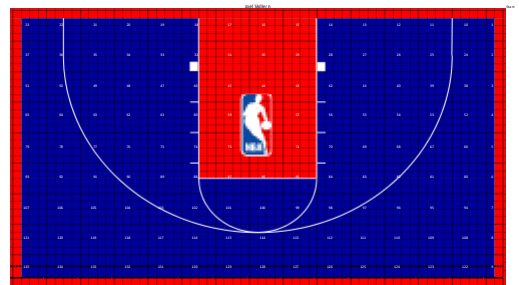
INTRODUCTION

CONGRATULATIONS ON YOUR NEW COURT

Thank you for purchasing your new court tile system. This is a suspended tile surface attached together with a special latching mechanism that snaps together easily. To ensure a trouble-free installation, certain guidelines must be followed

THE COURT DIY DIFFERENCE

Your custom court was fully assembled in our warehouse and all requested lines and logos were pre-painted by our team of professionals in a controlled environment to ensure accuracy and longevity. We then numbered each section, disassembled your court, and packed the tiles according to your numbered diagram. This court makes your DIY installation simple. However, if you have questions or need assistance during the assembly of your court please call us at 1-866-732-2966.



THINGS TO KNOW

ABOUT OUR COURT TILES:

Our game court is made up of tiles, each measuring 10.03" square. These tiles are connected by a simple, but precise interlocking mechanism. The picture shows the hook side and the receiver sides of the tile. (See image 1)

EXPANSION:

The tile is a polypropylene plastic floor, which expands and contracts with temperature changes. A 100' floor can expand 2" on both sides lengthwise when the weather warms up to 100°F (37°C). For this reason, it is important that the tile be trimmed at least 1/2" from any stationary object such as a goal post or fence post. Tips on trimming your tile are outlined on Page 5. (See image 2)

SUBSURFACE PREPARATION:

It is important that the surface of the substructure enables the court to expand and contract. Asphalt, being oil based and rough, is inherently slippery and makes a very good subsurface, as well as a rough (medium broom) cement finish. If the tiles expand without being able to slide, it will start to buckle in various portions of your court.

The tiles can be laid over structural cracks (no wider than 1/2") in the subsurface. Sharp cracks should be faceted or rounded so that the ball bounce is consistent and the tiles don't "catch" when the floor expands and contracts. (See image 2)

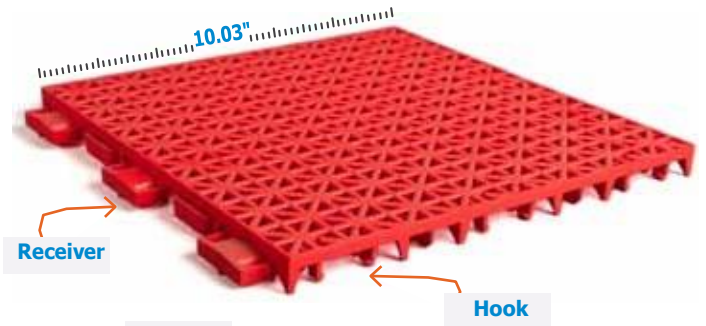


Image 1

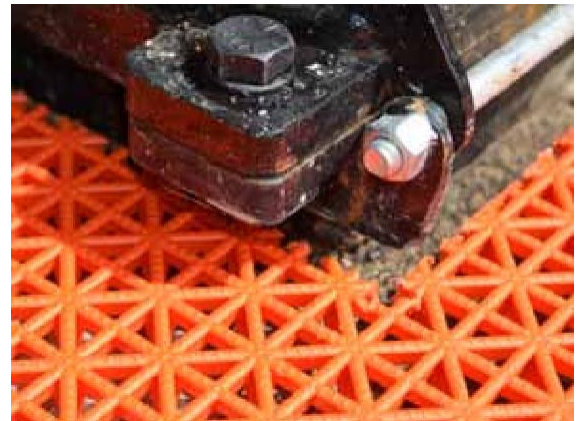


Image 2



Image 3

INSTALLING YOUR TILE

STEP 1

The easiest way to install the court tile is to start in one corner with the hook end of the tiles facing to the right and down; or in a more basic description “pointing towards the corner”. Locate Panel #1 on your diagram and find panel #1 of your tile and simply lay the tile into place. (See Image 1)

Do not snap your tile together on this step. Lay each panel of tile next to each other until your court is fully laid out. You will snap your tiles together in Step 4.

STEP 2:

Locate Panel #2 and lay into place, continuing in numerical order moving across your diagram until all panels are in place.

STEP 3:

Step back and visually inspect to ensure sure your sections are in their proper place. Make sure the basketball lane lines up with your goal, as well with any tennis lines, logos and other lines matching your diagram, etc.

STEP 4:

Snap your tiles together. Starting with #1 and move across your court in the same order you laid the tiles down. By gently stepping on the seams, starting at one corner, the hook ends are pressed into the receiver end for a strong hold. (See Image 2)

DO NOT USE EXCESSIVE FORCE! THIS WILL CAUSE DAMAGE TO THE COURT TILES.

STEP 5: FOR COURTS 30' X 30' AND SMALLER ONLY

Secure one edge of your basketball court. See Page 6 for instructions on Anchoring Tile To Subsurface.

STEP 6:

Install your ramps and corner pieces. You will have 2 types of ramps, a receiver end and hook end, and 4 corner pieces. (See Image 4)

STEP 7:

Remove all the numbered stickers and enjoy your new court!



Image 1



Image 2



Image 3

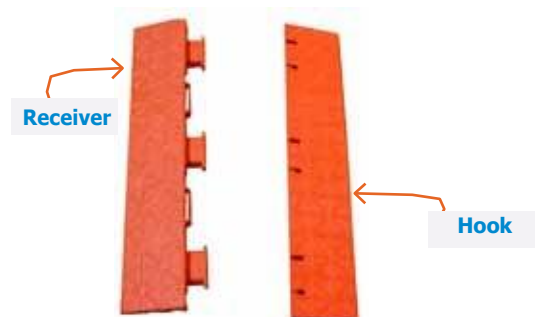


Image 4

TRIMMING TILE

TRIMMING TO FIT:

Trimming the tiles to fit along an edge or to go around an obstacle may be necessary in order to fit properly. If this is necessary for your installation there are several options available for cutting the tile.

The tile can be trimmed using a table saw as shown in image 1.

The tile can be trimmed with a hand-held circular saw as shown in image 2. You will need to use a fine tooth blade to keep the saw from chipping the tile. This method works well if you have several tiles that need to be trimmed to the same length.

Another method for trimming tile is a sharp razor knife or box knife as shown in image 3.

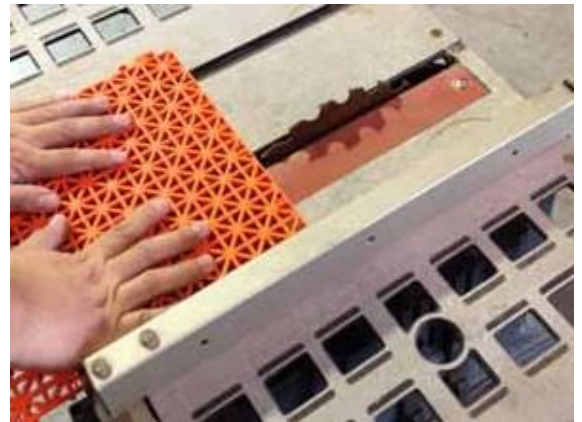


Image 1



Image 2

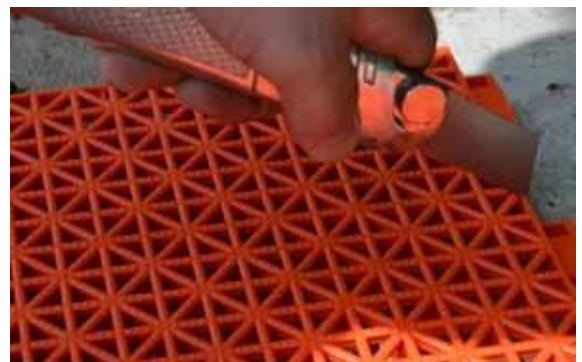


Image 3

ANCHORING TILE

ANCHORING TILE TO SUBSURFACE:

Courts which are smaller in size (typically 30' x 30' or less) and see a lot of activity may be susceptible to shifting. It is generally more noticeable on basketball courts. The tiles tend to shift towards the goal, which is caused by continuously running and stopping toward the goal.

Tools required

- Power Drill - Hammer drill preferred, used for drilling the holes in the concrete and installing the concrete screws in place.
- Concrete screws - Tapcon, 3/16" x 1 3/4", countersink head. The box of screws typically comes with the necessary masonry drill bit.

STEP 1:

Position the court tiles on the concrete slab so that the court is properly located with respect to the goal and the edges of the court. You will only anchor ONE SIDE of your court (the side OPPOSITE the basketball goal).

STEP 2:

Using a hammer drill, drill a hole within the center (or middle) locking tab, every other tile along only ONE side of your court (side opposite the basketball goal). Transition ramps will cover these screws. (See image 1)

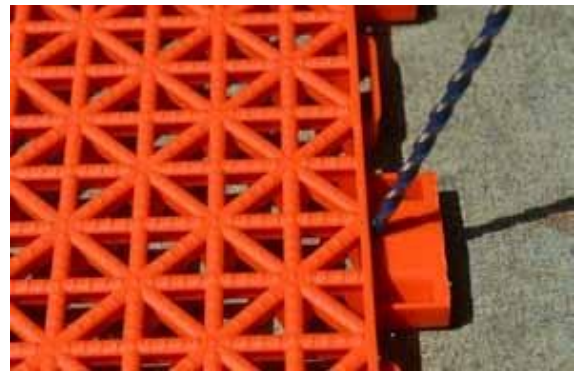


Image 1

NOTE: DO NOT SECURE ADDITIONAL SIDES OF YOUR COURT WITHOUT FIRST CHECKING. THEY CAN ADVISE ON WHAT IS BEST FOR YOUR PARTICULAR APPLICATION.

STEP 3:

Install the Tapcon anchoring screws. Make sure not to over tighten the screws. (See image 2)

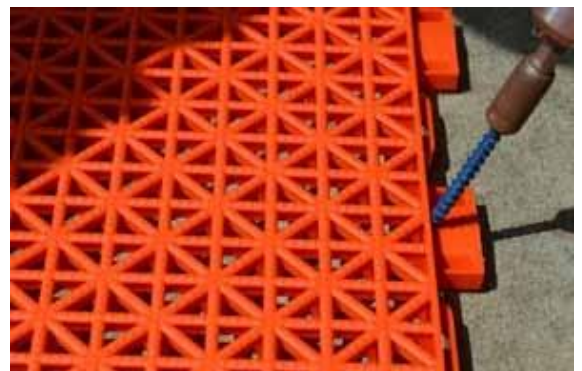


Image 2

STEP 4:

Install ramps as noted in STEP 6 on PAGE 2 of "INSTALLING YOUR TILE". (See image 3)



Image 3

CARE AND MAINTENANCE

REPLACING TILES:

Tiles are replaced in a matter of seconds. Insert a hook or screwdriver into a hole closest to the corner of the tile which does not have receivers and pull up.

MAINTENANCE CLEANING:

The court tile can be cleaned in a variety of ways. If it is an outdoor application, leaves, sticks, and trash can build up on the surface. A leaf blower can be used to remove most debris. If the tile surface is dusty or dirty then a power washer can be used - be sure to set it on a low-pressure setting and do not directly spray the painted lines.

Over time dirt, leaves, rocks and other debris may accumulate under the tile. If this does occur to the point where the tile is full, unsnap the tiles in large sections and slide the tile out of the way to clean the subsurface.

FOR MORE INFORMATION

You have now completed the installation process for your court. If you would like to submit a picture of your finished project email photos to sales@valuecarpetinc.com

If you encounter any issues during your installation process, feel free to contact us at 1-866-732-2966 for advice. We thank you for choosing our products as your preferred court tile provider. We are confident that you will enjoy many years of fun on your new court!